



## Stichting Kinderen Kankervrij

### Reviewing process project and program proposals and quality assessment ongoing projects and programs

#### KiKa scientific board

For assessment of proposals, KiKa is advised by the Scientific Board KiKa (WR KiKa). The WR KiKa is composed of distinguished independent cancer researchers and is approved by the Royal Netherlands Academy of Arts and Sciences (KNAW). Each member of the WR KiKa has a specific expertise, which together cover all aspects of cancer research.

De WR KiKa consist of the following members:

Prof. dr. Anne May (chairman)  
Dr. Marike Broekman (vice-chairman)  
Dr. Bert van der Reijden  
Prof.dr. Jürgen Kuball  
Prof.dr. Jos Beijnen  
Prof.dr. Geneviève Laureys  
Dr. Mirjam Heemskerk  
Prof.dr. Marcel Verheij  
Prof.dr. John Martens  
Prof.dr. Fred Falkenburg  
Dr. Roderick Beijersbergen  
Prof.dr. Mette Hazenberg

#### Reviewing process projects and programs

- No preselection is applied. However, KiKa can decide not to take a proposal into further consideration based on advice of the WR KiKa.
- Pilot projects are reviewed by the WR KiKa. External reviewers can be asked for advice.
- All multi-annual research projects are first reviewed by at least two independent national and international external reviewers. They judge the scientific quality of the proposal, the proposed methodology, the feasibility of the project, the track record of the researchers, and the relevance for pediatric oncology.
- Program pre-applications are reviewed by the WR KiKa. The WR KiKa advises which applicants should be invited to submit a full program proposal.
- Full program proposals are reviewed by at least three independent national and international external reviewers. Apart from the criteria on which projects are judged, programs are additionally assessed on opportunities for valorisation, translation and implementation of the research and the added value compared to project proposals.
- External reviewers assign an “overall score” to projects and programs, which can be: internationally leading / internationally competitive / good / average. Only those projects/programs that score “internationally leading” or “internationally competitive” are eligible for funding.

- The WR KiKa formulates a final verdict and advises the KiKa management board if the proposal is of sufficient quality to be eligible for funding. Based on comments given by the reviewers or WR KiKa, the project leaders can also be asked to first answer some specific questions and/or adapt the proposal (resubmission) before a definitive advice will be given.
- The management board decides which proposals will be granted, based on ranking and available budget.
- To assure extremely high quality, only projects that were rated very positively by both reviewers and the WR KiKa will be directly granted. Projects that are of high quality, but that are rejected based on lower ranking, will automatically be considered for financing in the next round.
- The decision of the management board will be communicated as soon as possible to the project leaders and the head of the pediatric oncology department of the medical center concerned.
- The procedures described above can be adapted or accelerated when KiKa considers this necessary.
- A resubmission will be reviewed by the WR KiKa. The WR KiKa can advise to send the resubmission to external reviewers.
- Only when a decision to reject an application is based on **factual inaccuracies**, the project leaders can appeal against the decision by writing a letter.

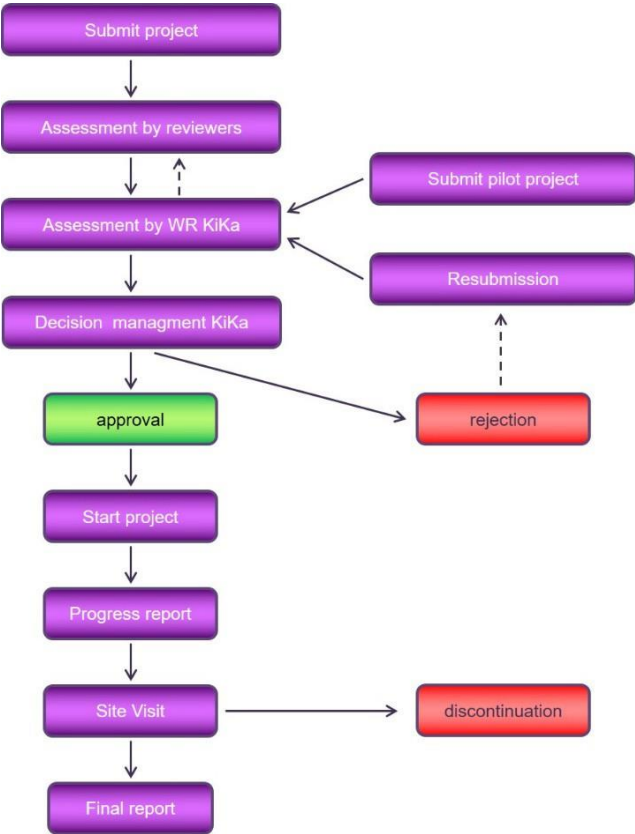
### Quality assessment ongoing projects and programs

The progress of ongoing projects and programs is assessed by KiKa at fixed moments. KiKa reserves the right to stop financing of a project if KiKa judges the progress to be insufficient. Progress will be assessed at three moments:

- **Progress report**; if a project/program has a duration of more than a year, progress should be reported a year after the project has started. Adaptations that are made based on the reviewer comments and possible time schedule issues or other difficulties should be reported.
- **Mid-term review**; all projects that have a duration of 3 or more years will be evaluated after 2 years during the KiKa mid-term review meeting. During this meeting, that is organized annually, the projects will be assessed by the mid-term review committee, that consists of an international panel of scientific experts. The mid-term review committee is chaired by a member of the WR KiKa. The mid-term review committee report its findings to the WR KiKa, which on its turn will advise the KiKa management board about continuation of funding. A negative assessment might result in (temporary) discontinuation of funding.
- **Final report**; when a project is finalized, the results and output of the research have to be reported. This report will be assessed by the WR KiKa.

Below, the KiKa reviewing process and quality assessment are depicted schematically.

**projects**



**programs**

